



# CAR LOCK SYSTEMS

KEYS - REMOTES - LOCKS



## CIP Easy Car Key Programmer quick start manual

EN

# CIP Easy Car Key Programmer programmes car keys remotely

## Contents

1. Working with the CIP p. 3
2. Important information before starting p. 5
3. Getting started quickly with the CIP p. 8
4. Logging in and selecting a CIP service p. 10
5. Tips when programming with the CIP p. 11



# 1. Working with the CIP

You can now use the CIP to programme and pre-code car keys from many makes in your own workshop. It's simple. Using the CIP you can remotely connect any vehicle with an online diagnostics specialist. This allows you to carry out programming rapidly. The major advantage is that the vehicle stays in your workshop, saving you time and money!

---

## Benefit from all CIP services, such as:

- **programming car keys and hand transmitters**  
(both OEM and own-brand)
- **pre-coding of Code 2 car keys (all Fiat-based models)**
- **reading out PIN codes**
- **various programming activities**  
(headlights, tow bars, airbags etc.)
- **calibration of various components**
- **programming when replacing modules**
- **diagnostics and technical assistance in the event of faults**

You can also utilise a wide range of CIP services for commercial vehicles.



# CAR LOCK SYSTEMS **KEY TO MOBILITY**

## 2. Important information before starting



### What does the CIP pack consist of?

The pack contains 1 CIP, 1 OBD cable, 1 screwdriver set and 1 reset pin.

### Other than the CIP pack, what else do you need to use the CIP?

- a smartphone, tablet, laptop or PC
- a good WiFi connection\*
- a vehicle to connect to
- your login details (these were provided by e-mail)
- a car key (if you want to have this programmed)

*\* The CIP can also be used with the aid of an Ethernet connection or via a hotspot.*

### Can I get help during the CIP installation or when using the CIP?

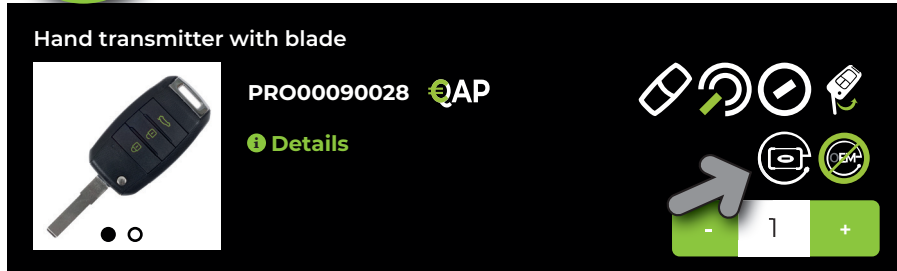
Of course! We have a special CIP Helpdesk for all questions relating to the CIP. You can find the contact details on the reverse of this leaflet. We're here to help you!

## How do I order a CIP service, such as key programming?


1


### Order in advance via [www.carlocksystems.com](http://www.carlocksystems.com)

Login to [www.carlocksystems.com](http://www.carlocksystems.com) and enter the chassis number of the vehicle.



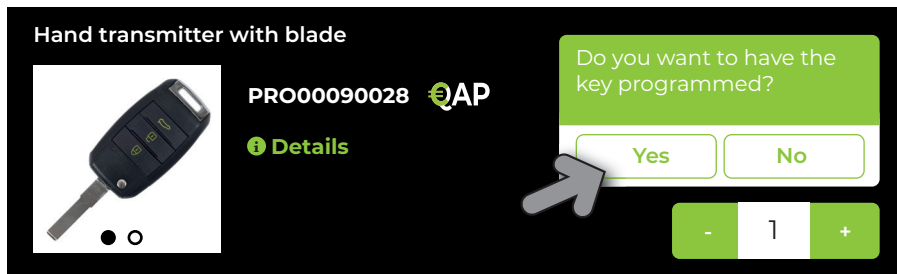
Hand transmitter with blade

PRO00090028 


 Details


Quantity: - 1 +

 Ordering a car key? The CIP logo shows whether the car key is CIP-compatible.



Hand transmitter with blade

PRO00090028 

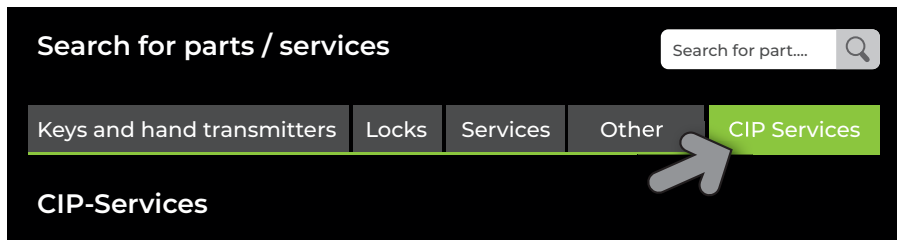
 Details

Do you want to have the key programmed?

Yes No

Quantity: - 1 +

If you want to have the key programmed, you select 'yes'. Once you have received the key you ordered, all you need to do is connect the CIP to the car to programme the key. The CIP will recognise the vehicle and automatically start up the pre-ordered programming.



Search for parts / services

Keys and hand transmitters Locks Services Other **CIP Services**

CIP-Services

Other CIP services, such as tow bar programming can be found at the top right in your ordering screen under the 'CIP Services' tab. Via VIN detection, you get an overview of all possible CIP services for the specific vehicle. You can also order these services in advance. Just as it does with key programming, the CIP will recognise the vehicle and automatically start the service that was ordered.

## 2

### Order directly via the CIP

#### Create ticket

Service to be carried out

Select 1 service:

**Programming transponder key**

Transponder key programming

- As well as ordering in advance you can also connect the CIP to the vehicle, and then select a CIP service.
- Via VIN detection, you get an overview of all possible CIP services for the specific vehicle.
- The service you have selected will be started directly.
- In chapter 4. **Logging in and selecting a CIP service** (p. 10), you can read up on how to order via the CIP.

### Can I also have Code 2 car keys programmed with the CIP?

Certainly! So-called 'Code 2 car keys' - pre-coded in the factory - can also be programmed quickly with the CIP. For this Car Lock Systems offers (their own-developed) car keys and hand transmitters. You can see this during the order process via the pre-coding logo.



#### How exactly does the pre-coding with the CIP work?

- You connect the CIP to the vehicle and the pre-coding is then read out.
- You then place the new car key (which you have ordered in advance) in the key holder of the CIP. This will code the transponder correctly within a few minutes.
- You can now have the car key programmed to the car using the CIP.

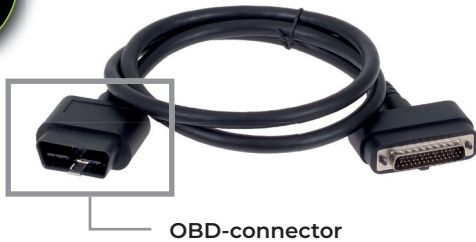
Thanks to the CIP you no longer need to order pre-coded car keys from the factory; instead you can just order them quickly and easily from Car Lock Systems. You will already have a Code 2 car key programmed within one day!

# 3. Getting started quickly with the CIP

Follow the 3 steps below.

## step 1

### Connect the CIP to the car



- Attach the OBD cable to the CIP using the Torx-10 screwdriver.
- Connect the OBD connector to the OBD port of any vehicle. The CIP is now connected to the vehicle.

Have the password for your WiFi network handy to be able to run through step 2 quickly.

## step 2

### Create connection with Car Lock Systems

- A few seconds after connecting the CIP to the vehicle, the orange LED will light up continuously. The CIP hardware is now ready.
- At the same time the green LED will start to flash slowly (1x per sec.). The integrated CIP WiFi module is online and ready for connection to a network.
- Now, via the WiFi settings on your smartphone, tablet, laptop or PC, search for the CIP connector number and create a connection. (For the CIP connector number, see the reverse of the CIP).

- Now, using the browser of your smartphone, tablet, laptop or PC go to: **connector.help** Select your WiFi network (and enter the password if required).

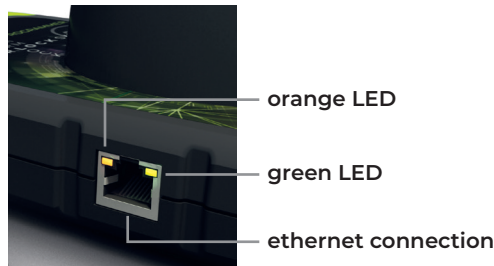
Connector311122	
<b>Connector info</b> Wifi mac address: 0x:00:00:00:x0:x0 WLAN mac address: 0x:00:00:00:x0:x0	
<b>Available networks</b>	
CLS security WPA2-personal	
CLS Development security WPA2-personal	





**step**  
**3**

**Check whether the CIP is ready to use**



- Once the green LED has flashed very briefly, it will light up continuously.  
→ **Congratulations! The CIP is successfully connected with the server of Car Lock Systems.**
- Does the green LED keep flashing?  
→ The connection has not been made successfully. Start again from step 2.

## 4. Logging in and selecting a CIP service

**Is the CIP ready to use? Then follow the instructions below to log in and select a CIP service directly.**

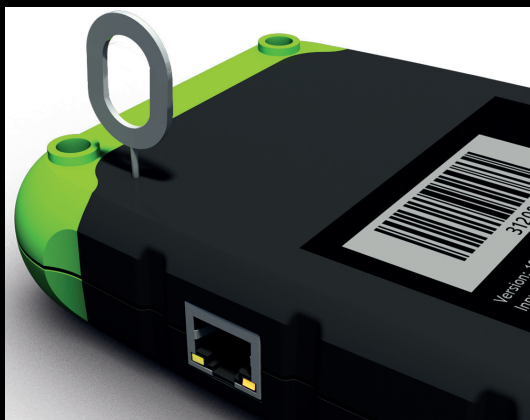
- Using the browser of your smartphone, tablet, laptop or PC go to **CIP.obd.help**
- Now log in (you have received your login details by e-mail).
- Select the CIP connector number.
- The chassis number is shown via the automatic VIN detection. If the VIN is not detected, click on 'Enter VIN manually'. Enter the correct chassis number here and click on 'next'.
- Check whether the vehicle description is correct.
- You will now see a selection menu\* with possible CIP Services for the specific vehicle.
- In this menu, select the service you want to have executed and follow the instructions.

\* *Would you like to change the language settings? Click on the menu icon top right and under 'Language' select the desired language.*



### Connecting the CIP to another network

The CIP only remembers 1 WiFi network. This is the network to which the CIP is connected. Do you want to use CIP via another network? For example if you are traveling or in a different location? Then follow the instructions below.



- Connect the CIP to a vehicle.
- Use the reset pin provided or a paperclip and press the reset switch in for approx. 2 seconds.
- The orange LED lights up continuously and the green LED flashes slowly.
- Now go to chapter **3. Getting started quickly with the CIP** (p. 8) and run through steps **2** and **3**.

## 5. Tips when programming with the CIP

- Use a separate WiFi network for your workplace, i.e. not the guest WiFi.
- Make sure that **all car keys** and any security codes for the vehicle are available and check in advance that all batteries are still working properly.
- Place **all car keys** within easy reach. Sometimes being able to act fast is essential.
- Make sure that the battery is connected with a good support charger.
- Lock the vehicle during programming.
- For PSA vehicles: never mix up loose transponders and hand transmitters. This is because they are connected.





**CAR  
LOCK  
SYSTEMS**  
KEYS - REMOTES - LOCKS

# KEY TO MOBILITY

---

## Contact

**CIP-Helpdesk**

[cip@carlocksystems.com](mailto:cip@carlocksystems.com)

+31 183 30 52 21

[www.carlocksystems.com](http://www.carlocksystems.com)

© Car Lock Systems. All rights reserved. SST\_FOA5-CIPb\_032021\_001\_EN